



Protecting our land, preserving our legacy

www.ealt.ca

Annual Report 2009 -2010 Edmonton and Area Land Trust

Edmonton and Area Land Trust
9910-103 Street, Edmonton, Alberta, T5K 2V7
Tel: 780 483-7578; Fax: 780 483-7627; Email: info@ealt.ca
Charitable Number: 85470 1356 RR0001

Table of Contents

MESSAGE FROM OUR CHAIR	1
BOARD OF DIRECTORS, 2010	3
EALT MILESTONES.....	3
EALT ACTIVITIES AND ACCOMPLISHMENTS.....	5
<i>Our Conservation Priorities.....</i>	<i>5</i>
<i>Lands Securement Activities.....</i>	<i>5</i>
The Glory Hills Property.....	5
The Golden Ranches	6
The Hicks Property	6
Larch Sanctuary.....	7
Memorandum with the City of Edmonton	7
<i>Education, Communications and Outreach</i>	<i>8</i>
Presentations	8
Culture-Conservation Connection	8
Social Media.....	9
Newsletter	9
FUNDRAISING AND OUTREACH	9
<i>Acknowledgements.....</i>	<i>10</i>
Thankyou to our Donors	10
Thank you to our Volunteers, Partners and Supporters	11
<i>Grants and Awards.....</i>	<i>12</i>
EALT FINANCIAL HIGHLIGHTS	13
APPENDIX: EALT PROGRAMS	



"A common experience of the quality of wildness binds and bonds people together with the common goal of defenders of wild spaces and species" --
John James Audubon

Message from our Chair

My involvement with natural areas and the environment began more than thirty years ago, and since that time I have seen many changes in the landscape, in people's attitudes and in concern for our natural world. It has been my privilege to be part of the Edmonton and Area Land Trust from its inception. In the last three years the Edmonton and Area Land Trust has moved forward significantly, and I am proud to be a part of this growth.

Our board has continued to develop policy which enables us to do our work and assure the public that we have taken into consideration a variety of issues. Our privacy statement commits EALT to the protection of individual privacy, while our statement of ethics reminds us that we operate with honesty and integrity in the public's interest. The risk management policy assesses the organization's risks and how to mitigate those risks. The land tracking documentation policy will allow all pertinent information on our properties to be duly recorded in a central place for all to access and the EALT guidelines to management planning sets out a management template which can be used for individual property management plans.

More engaging than policy, we launched our first newsletter *Conservation Connections*, which is sent out to our broadcast email audience and posted on the website. We also opened a *Virtual Art Gallery* on the website featuring local artists' work depicting local scenes. Writing about conservation will be the next cultural connection. The launch of our facebook site has been a great success, with many friends sharing thoughts and ideas.

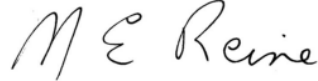
Our land securement has really taken off this year. It has kept our Executive Director busy with the numerous components of securing land. Two anonymous donations were given to Edmonton and Area Land Trust. One was used to purchase 3 ¼ sections of land on the Golden Ranches, where we are partners with six other organizations; this was added to a portion secured jointly last year. The second donation was used to purchase property in the Glory Hills where EALT worked independently, making this our first stand-alone project. EALT and the City worked to develop an MOU agreeing to work together toward enhancing the Natural Areas system; as well, we are close to completing a CE on the Larch Lands which was officially opened in October, 2010. On our jointly owned Hick's property, we worked with NCC and others to clean up junk on the site, and then with the Edmonton Nature Club who worked with volunteers to do monthly monitoring of the Hick's property throughout the summer.

This fall we continued with our fundraising endeavours and planned a larger outreach campaign with dedicated Task Force members approaching a variety of people. Our goal was somewhat short, but we secured future contacts and commitments for next year.

The Edmonton and Area Land Trust is continually involved in outreach activities and our Program Coordinator, Executive Director, and I have presented to numerous community organizations. We are also working with King's University College and Grant MacEwan, on a range of projects that will be ongoing.

We could not accomplish what we do without our donors, partners and volunteers that are a vital part of our organization. I want to personally thank all who have been involved with the Edmonton and Area Land Trust. Special thanks to the Board of Directors, the Program Coordinator, Morgan Traverse, and especially to our Executive Director, Pam Wight, who makes our organization work and brings our land securement to fruition.

We have made great strides in our first three years and we look forward to this continued momentum.



Marg Reine
Chair, Edmonton and Area Land Trust

Vision

The Edmonton & Area Land Trust has as its vision an Edmonton region where natural area systems are valued, preserved for future generations and play a key role in the social, economic and environmental life of the residents of the area

Mission

The Edmonton and Area Land Trust will be recognized as a not-for-profit leader in the selection, securement and stewardship of natural area systems, appropriate natural interconnections and cultural heritage landscapes in the Edmonton area primarily for the use, enjoyment or benefit of its present and future citizens.



Board of Directors, 2010

Marg Reine, Chair of the Board
Science educator

Martin Garber-Conrad, Treasurer
Chief Executive Officer
Edmonton Community Foundation

Paul Roberts, Secretary
Senior Wealth Advisor & Portfolio Manager
ScotiaMcLeod - Scotia Private Client Group

Grant Pearsell, Director
City of Edmonton
Office of Natural Areas

Glen Thoman, Director
Project Manager
Al-Terra Engineering

Cindy Chiasson, Director
Executive Director
Environmental Law Centre

Brenda Wispinski, Director
Executive Director
The Beaver Hills Initiative

Dr. Raquel Feroe, Director
Appointee
Edmonton Nature Club

We give thanks to the entire Board of Directors who give their time to work for the greater good of the citizens of the region via the Edmonton and Area Land Trust. We are delighted that our retiring directors are committed to EALT and are supporting us in the position of advisors.

EALT Milestones

Land Trust Policies	Year
Privacy Statement	Aug, 2010
Statement of Ethics	Aug, 2010
Risk Management Policy	Jun, 2010
Property Tracking Policy	Jun, 2010
Guidelines for Site Management Planning	Jun, 2010
Public Membership Policy	Mar, 2010
Third party liability for ownership of lands Hicks Property	Oct, 2009
Insurance for D&O liability	Oct, 2009
Terms of Reference Ad Hoc Working committees	Sep, 2009
Terms of Reference for EALT Advisors	Sep, 2009
Segregation of Duty-Donations Policy	Aug, 2009
Public Member Policy	Jul, 2009
Development of a Site-screening team	Jul, 2009
Responsibilities of Board of Directors	Jul, 2009
Financial Segregation of Duty-Donation Policy	Jul, 2009
Board Member Agreement	Jul, 2009
Land Securement Policy	Jul, 2009
Adopted Board Roles and Responsibilities Terms of Reference	Dec, 2008

Key Events	Year
MOU signed with COE for Natural Areas protection	Dec, 2010
Secured land in the Glory Hills via anonymous Ecogift donation	Nov, 2010
Presented at the CLTA Conference in Banff, re Golden Ranches	Oct, 2010
The King's University College agreement that Capstone students to develop Signage Proposal for Larch Lands	Sep, 2010
Signed a Wetland Remediation Agreement with DUC for Golden Ranches	Sep, 2010
Ghost Bird event at the Royal Alberta Museum	Sep, 2010
Ribbon Cutting of City's first Environmental Mural	Sep, 2010
Launch of first fundraising campaign	Sep, 2010
Launch of EALT's Virtual Art Gallery & Culture-Conservation Connection	Sep, 2010
Summer Conservation Intern from The King's University College arrives	Jul, 2010
Secured 3 ¼ Sections of Golden Ranches, via anonymous Eco-gift donor	May, 2010
Launch of Grant MacEwan University literary connections partnership	May, 2010
Obtained joint title to Hicks property	Feb, 2010
Launch of EALT Facebook Page and Group	Jan, 2010
Production of first newsletter: Conservation Connections	Dec, 2009
Project Coordinator hired	Dec, 2009
Presentation to Capital Region Board	Nov, 2009
Formation of EALT Advisory Board	Oct, 2009
First presentation to Transportation & Public Works Committee	Sep, 2009
Board retreat to work on sub / committee structure and policies	Jul, 2009
Expansion of EALT Board of Directors begins	Aug, 2009
Presented at the National Stewardship and Conservation Conference in Calgary	Jul, 2009
Participated in ICLEI Congress, hosted by COE, presenting on two occasions, and having a week-long display in City Hall	Jun, 2009
Registered EALT with Canada Helps, for electronic donations	Oct, 2008
Developed an EALT brand of materials and website for EALT	Oct, 2008
Joined the Golden Partnership for ranch conservation	Sep, 2008
Received status from Environment Canada as a Qualified Agency to received ecological gifts	Sep, 2008
Resolution to adopt Imagine Canada's Ethical Fundraising and Financial Accountability Code	Aug, 2008
Terms for the members of the Board set at AGM	Aug, 2008
Charitable status granted by CRA	Jul, 2008
Joined ALTA, CLTA	Ap, Aug, 2008
Executive Director hired	Mar, 2008
COE decision to endow \$2.5 million to EALT, held by the Edmonton Community Foundation	Nov, 2007
Directors' work book developed	Apr, 2007
Certificate of Incorporation Registered Part 9 company	Mar, 2007
EALT formed, Memorandum of Agreement for members	Nov, 2006
First Business Plan developed by Allan Bolstad	Oct, 2006
City of Edmonton participated as a founding partner in the land trust	Jun, 2006

EALT Activities and Accomplishments

Our Conservation Priorities

EALT accepts donations of property and/or funds, purchases land, and holds conservation easements that help landowners establish a legacy of permanent conservation of areas of ecological significance. We have developed a *Land Securement Strategy*, which identifies our regional conservation priorities. These are properties that include:

- Large, natural shorelines (lakes, rivers)
- Prairie remnants
- Unique topographical features
- Major corridors or linkages
- Large woodlands
- Important cultural sites
- Areas within or adjacent to natural core and linkage areas

Lands Securement Activities

2010 was a very productive year for the EALT. In addition to acquiring 3 quarter sections of Golden Ranches, we also acquired a 110 acre property in the Glory Hills area, west of Edmonton. We also responded to the approaches of several other landowners interested in conservation, and we hope to have more land secured in the New Year.

The Glory Hills Property

EALT is excited to announce the donation of a beautiful parcel of land in the Glory Hills area. The property contains several wetlands, including a lake. There are also many birch stands containing a high level of biodiversity. The property is located within the Boreal Forest and the Aspen Parkland ecological regions and serves as a representative transition zone known as an ecotone.

A range of wildlife species inhabits this property. Due to the large lake in the center of the property, as well as another significant open-water wetland, many waterfowl breed and roost here during the spring/summer/fall seasons. Some of the waterfowl observed on or around the property include bufflehead, common loon, goldeneye and a great blue heron colony. The large open-water wetlands also provide important habitat for beavers. Studies have shown that the presence of beaver on the landscape lessens the devastating effects of droughts, a serious concern for the future due to climate change. Other mammals observed on and around the property include deer, moose, coyote, porcupine, and red fox.



This property assists in firming a working relationship with Parkland County, as well as with the generous donor. It was designated as an Environmentally Significant Area (ESA) by the County of Parkland, but zoned for subdivision, thus we have managed to protect this natural area from the incremental incursion of rural residences that is happening within ESAs in the Capital Region. We are hopeful that this land securement will serve as a model for other lands in the Glory Hills.

The Golden Ranches

EALT is one of the partners who have helped secure the Golden Ranches, which at over 1,500 acres, is the largest working ranch in the region. It forms part of a conservation corridor within the Beaverhills Initiative area, at the junction of North and South Cooking Lake. The ranch has open pastures and mature forestlands, and a very important stretch of shoreline (8 kms), supporting waterfowl, shorebirds and songbirds. There are also moose, white-tailed and mule deer, coyotes, falcons, ospreys, and other wildlife.



Through an anonymous donor, who approached EALT in 2008, the first ranch lands were secured by the partners in 2009.

In 2010, EALT obtained title to 3 quarter sections of the ranch through the generosity of an anonymous donor. We also entered into a Wetland Remediation Agreement with Ducks Unlimited Canada, to remediate the wetlands on these lands.

In addition to these lands, this year the partners were able to acquire the remainder of the Ranch except the home half. The titles of the parcels are anticipated to be shared among the partners, including EALT. A creative sentencing grant from Syncrude provided \$900,000 to ACA, AFGA and EALT, to go toward securement of various parcels on the Ranch. This allowed the partners to acquire the smaller parcels that line the shores on South Cooking Lake. EALT, the AFGA and the ACA signed an agreement to share title on our lands, and thus provide a higher level of security of conservation for them.

Now that the majority of the Ranch is held by the partners, the next steps are to purchase or place a conservation easement on the home half, and to develop a management plan, which is expected be in place by next year.

The Hicks Property

EALT and the NCC now hold joint title to the Hicks property. Some exciting management activities have taken place over the summer. In June, a volunteer day called “*Picks for Hicks*” was organized. This allowed people to help to clean up the rubbish around the home site part of this natural area. This included old fencing, tires, broken down buildings and discarded appliances. After a day of very hard work, the volunteers were led on interpretive hikes around the property that included information about past uses of the property, as well as ecological information on the plants and animals that live there.

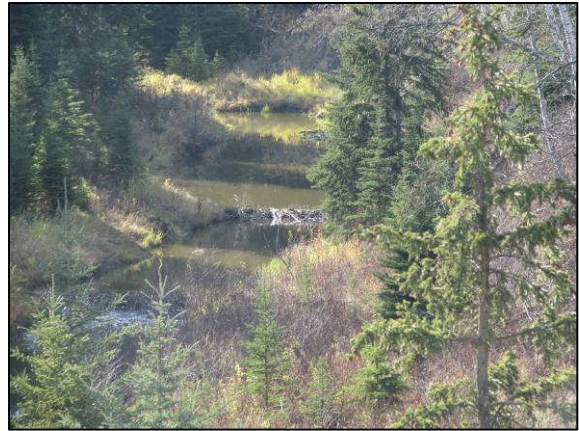


EALT also collaborated with the Edmonton Nature Club (ENC) to organize volunteers who visited the property monthly, from May – September. During these visits the volunteers joined EALT’s Project Coordinator in conducting flora and fauna surveys. Each trip had different volunteers and different

weather. A subsequent report recorded all the observations made during these visits, and it was provided to all the participants. This sets the ground work for preliminary baseline work.

Larch Sanctuary

EALT, Larix Communities, and the City of Edmonton have been working together to develop Conservation Easement (CE) on the lands known as Larch Sanctuary. This is an important natural area with an ox-bow adjacent to Whitemud Creek, and abutting the green community development known as Larch Park.



While the CE is not yet in place, all parties are confident that there will be a positive outcome for conservation on this property. The official groundbreaking ceremony for Larch Park occurred in fall, with elected officials from all levels of government as well as the Poole family who owned the land, and wished the creek lands to be cared for by EALT. EALT, along with the Mayor, City Councilors, the donor, and the Sierra Club, were invited to plant larch trees at this event.



Peter Poole



Mayor Mandel

EALT is working reciprocally with The King's University College, regarding education and the Larch Lands. A key project was research into integrated interpretive signage for both Larch Park and Larch Sanctuary. The Capstone students researched various aspects of sign locations, physical characteristics, interpretive contents, potential user groups, and design options and costing. The resulting information will be useful for all EALT properties. Also, EALT's Chair and Program Coordinator led two field trips to Larch Sanctuary.

Memorandum with the City of Edmonton

The City of Edmonton and EALT share a number of conservation goals for natural areas within City boundaries. With this in mind, we jointly signed a Memorandum of Understanding regarding working together to achieve mutual goals related to natural areas securement and protection.

Education, Communications and Outreach

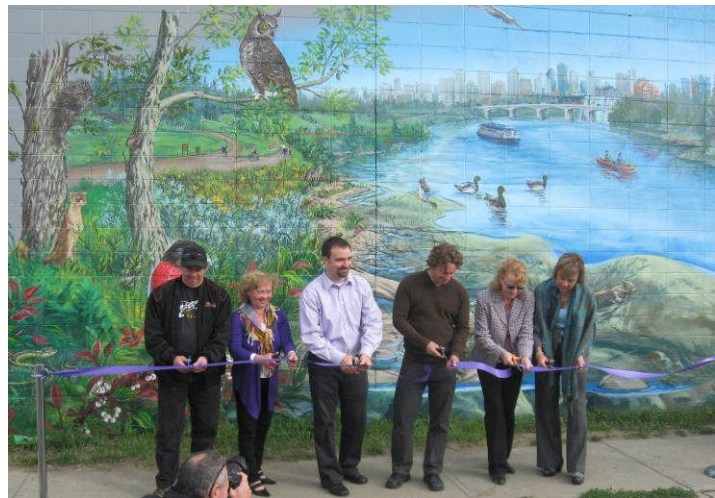
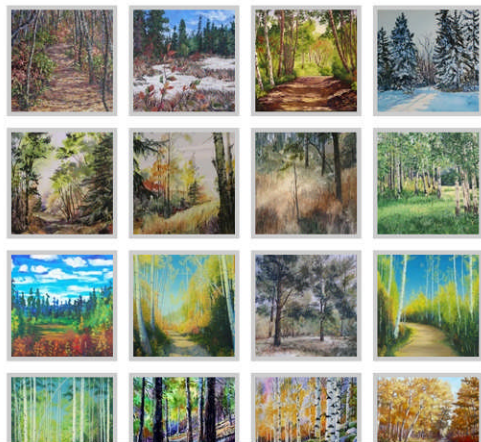
Presentations

EALT has made a number of presentations for many types of groups in the region. These include: governments; developers; land trusts; ENGOS; professional bodies; national and international conferences, and local community and interest groups. We are always happy to respond to requests to provide materials and displays, and to present with information about conservation and its benefits to all citizens, EALT's activities, or how we can work together.

Culture-Conservation Connection

EALT is excited to have its **Virtual Art Gallery** up and running on our website! This art gallery comprises works created by local artists about our special region and the associated wildlife and habitat. These pieces were selected by a jury of local experts. The Virtual Art Gallery is on our website complimenting our Photo Gallery, and together, begin our Culture-Conservation Connection explorations. Such a concept is totally innovative in the world of conservation, and allows viewers to feel the various emotions and passions that different types of artists display towards our environment. To view and learn more about this exciting new project please visit our website: <http://www.ealt.ca/culture-connection/>

Wooded Habitats



As a follow-up to the City of Edmonton's ICLEI Congress in 2009, we proposed to the City that a future city-sponsored mural relate to the environment, since the murals program is part of the Capital City Cleanup Campaign. Depictions of the City's natural capital would seem to be a most appropriate topic for an educational mural. In September, the City's first environmental mural was completed, depicting the flora and fauna of the river valley habitat. Our ED spoke at that ribbon-cutting ceremony, along with Councillor Linda Sloane, artist Kris Jensen, community league representative, and the owners of the building. Do check out this wonderful Giant of Edmonton at Westside Automotives: 10010 – 168 Street.

Social Media

EALT's Facebook page is an exciting initiative that the land trust has been expanding in 2010. We have a Fan page with over 300 "likes" and a Group page with over 100 members. We use this medium to communicate upcoming events. We also use it to post videos and news articles relevant to nature, our environment, and our cause. We hope to expand our social media presence in the future.

Newsletter

We produced three newsletters in 2010 and distributed them digitally on our website, via email, and by hard copy at events and in our outreach packages. This newsletter, entitled *Conservation Connections*, and well-illustrated, shares exciting success stories of our land trust in addition to activity updates. We will be continuing to produce these informative summaries in 2011.

Fundraising and Outreach

Since we are a new organization, our challenge has been to get the word out in the region, that we exist, what we do, why it is important, and how citizens and businesses and other organizations can contribute or collaborate, both financially and in other ways. We invite all those who feel our work is important, to contact us about how they might contribute to conservation.

In the fall of 2010, after obtaining assistance in planning fundraising and outreach, EALT began our outreach campaign. Volunteer Task Force members approached a variety of contacts and we were able to raise about \$60,000 for the Edmonton and Area Land Trust. Part of the benefit of this campaign was that we raised awareness of our organization. We made many new contacts and extended our outreach into the community, which will enable our campaign for the next year to run more smoothly. Not only are we grateful to our Task Force members and to donors, but also to Councillor Don Iveson, and Global TV's Gord Steinke, for acting as Honourary Co-Chairs of this campaign.

Acknowledgements

Thankyou to our Donors

EALT's board and staff are dedicated and commit their time and energy to ensuring that our activities benefit conservation. To carry out this work, we depend on donations, grants, and volunteers. Every charity relies on donors. We could not exist without your generous contributions. Many thanks indeed!

<u>Benefactor \$10,000 or more</u>		
John & Barbara Poole Family Fund		
<u>Steward \$5,000 - \$9,999</u>		
<u>Guardian \$2,500 - \$4,999</u>		
Herman & Elly de Johng Family Fund	Sherrick Management	Pamela Wight
<u>Supporter \$1,000 - \$2,499</u>		
The Lee Nature Sanctuary Society (LNSS)	Ann & John Dea Family Fund	
<u>Friend \$100 - \$999</u>		
Kim Westcott	Hartnagel Family Fund	Ross and Eleanor Wein Family Fund
Katherine Jacob Fund	Bruce Saville	Associated Engineering Alberta Ltd.
Betty Fisher	Petra and Richard Schulz	Bruce Thompson and Associates
Ron and Marlene Ramsay	Christine Brown	Christine Watts and T. Hogg
Jeffery C. Pearson	Jim and Elaine Butler	Eidos Consulting
Katherine Jacob Fund	Margaret Reine	Yaremchuk and Annicchiarico LLP
Field Management Services	J. Angus Watt	J. S. Nelson
Maureen and Paul Shenher	John R. Clements	Roger R. Breault
Louise and Mark Lewis	Kim Westcott	Hodgson Marsh Stewardship Group
Ludwig Carbyn	Edmonton's Environmental Advisory Committee	

In addition to these generous donors, we would like to thank the following, who also have helped support EALT financially: Rick Pelletier, Laurie Russell, Madeleine Brown, Robert Arnold, Mark and Allison Lewis, Weston Nelson, and McCrum Consulting Ltd. To the anonymous donors who gave cash or electronically, we give our sincere thanks, as well as to those who gave in memory of Linda Sloane's father.

Thank you to our Volunteers, Partners and Supporters

The involvement of volunteers is critical to the effective development and success of EALT. They are our lifeblood. Volunteers are integrated into all aspects of our operations, from our Board of Directors to our Advisors, supporters, site assessors, writers, planners, website managers, and others.

<p>Golden Ranch Conservation Partners Alberta Fish and Game Association Alberta Conservation Association Ducks Unlimited Canada Nature Conservancy of Canada Strathcona County The Beaverhills Initiative Foundations Alberta Real Estate Foundation Alberta Ecotrust Norcross Wildlife Foundation TD Friends of the Environment Foundation</p> <p>Honourary Co-Chairs Don Iveson, Councillor Gord Steinke, Global TV</p> <p>Task Force Members Paul Roberts Glen Thoman Marg Reine Grant Pearsell Jack Clement Ross Hodgetts Ross Wein Ernie Ewaschuk Michael Phair Allan Bolstad Christie Boulter Dean Cooper Roger Breault</p> <p>The King's University College Signage Project John Woods Zoriana Eshenko Daniel Van Hoffen Naomi Korner Karin Sedeberg Kory deGroot Joel van Huisen (also Conservation Intern)</p>	<p>Fieldwork volunteers Brian Stephens Christine Brown Marg Reine Hil Reine Betty Fisher Barb Wyatt Linda Kershaw Terri Lynn Perron Sarah Pearson Daniel Laubhann Naomi Korner Heike Kohl Lynn Maslen Harry Stelfox Ashley Hillman Maggie Johnson Clara Qualizza Joel van Huisen</p> <p>Advisory Committee Harry Stelfox Glen Semenchuk Daniel Caroll Patsy Cotterill Laura Harrison Fran Savage Colleen Cassady-St.Clair Ross Wein Ernie Ewaschuk Kent Lamoureux Dan Grant Ted Hogg Toso Botic Erica Thompson Candace Vannin Colin Soskolne Christy Boulter Bob Gibbs Denise Verreault Anna Vesala Vivian Manasc Colin Lipsett Michael Evans Michael Ferber Jolie Whetzel Milton Davies Phyllis Kobasiuk Glen Lawrence Susan Barker</p>	<p>Support Letters FCSS, City of Edmonton, Community Services Edmonton Community Foundation Parkland County, Community Services The Greater Edmonton Alliance Alberta Abilities Lodges Society North Saskatchewan Watershed Alliance The Urban Development Institute of Alberta – Greater Edmonton Chapter Wildlife Rehabilitation Society of Edmonton Beaver Hills Initiative Edmonton Nature Club Canadian Wildlife Service, Environment Canada – Prairie and Northern Region Alberta Recreation and Parks Association Land Stewardship Centre of Canada Climate Change Central The Carbon Farmer Environmental Law Centre Legacy Lands Conservation Society</p> <p>Ghost Bird Volunteers Joel van Huisen Christine Piker Marg Reine Jim Butler</p> <p>Virtual Art Gallery Jurors John Maywood Pardee Badyal Marg Reine</p> <p>Services in Kind City of Edmonton (printing) Edmonton Community Foundation (printing) ScotiaMcLeod (printing) Segue Systems – Xerox Canada (printing) Mariusz Bereznicki, Symetrix Designs (website management) Melcor Developments (legal payments) Elizabeth Singbeil (collating) Wildbird General Store (collection box) Daniel Laubhann (writing brochures)</p>
--	---	---

Grants and Awards

We continue to benefit from grants and endowments received in the past. One of these grants included the Alberta Real Estate Foundation Grant that was used for the development of outreach materials such as our brochure and organization information package. We are also very fortunate to have an endowment from the City of Edmonton, held at the Edmonton Community Foundation, which covers part of our operations.

This year EALT was recognized as a valuable contributor to the Edmonton Community by being nominated for the *YMCA Peace Medal*. Marg Reine, our Chair, was present to receive the certificate. We were also successful in our pursuit of several grants:



A grant from the *Norcross Wildlife Foundation* was secured for the purpose of purchasing technological aids. EALT was able to purchase a laptop, GPS, scanner, and software as a result of this successful application.

TD Friends of the Environment Foundation awarded EALT a grant to go toward offsetting some of the professional fees and costs that were incurred in securing the 3 quarter sections of the Golden Ranches.



We also received an *Alberta Ecotrust* major project grant. This grant is being used toward professional fees and cost associated with the donation of the Glory Hills property, as well as the baseline and related activities of the first year of securement.

A number of grant applications to the provincial Communities Initiative Program for operational funding have not been successful to date. However, we were delighted to receive the final portion of our *Alberta Real Estate Foundation* grant for education and outreach, which enabled us to develop our brand, website, and outreach materials.



EALT Financial Highlights

**Edmonton and Area Land Trust
Income Statement
January 1, 2009 to December 31, 2009**

REVENUE

Unrestricted Revenue

Grants — Edmonton Community Foundation	112,500
Donations	<u>8,829</u>
Total Unrestricted Revenue	<u>121,329</u>

Restricted Revenue

Alberta Real Estate Foundation Grant	12,902
Amortization of deferred revenue	<u>676</u>
Total Restricted Revenue	<u>13,578</u>

TOTAL REVENUE	<u>134,907</u>
----------------------	----------------

EXPENSE

Advertising and promotion	12,902
Amortization	1,588
Board Meetings	1,540
Communication	2,292
Conference Fees	902
Goods and Services tax	734
Insurance	659
Interest and penalties	559
Office	3,660
Professional fees	11,765
Printing	0
Salary and benefits	104,465
Travel	<u>3,387</u>
TOTAL EXPENSE	<u>144,453</u>

NET INCOME	<u><u>(9,546)</u></u>
-------------------	-----------------------

**Edmonton and Area Land Trust
Balance Sheet
As at December 31, 2009**

ASSET	
Current Assets	156,459
Capital Assets	<u>9,869</u>
TOTAL ASSET	<u><u>166,328</u></u>
LIABILITY	
Current Liabilities	<u>18,678</u>
TOTAL LIABILITY	<u>18,678</u>
EQUITY	
Current Earnings	<u>147,650</u>
TOTAL EQUITY	<u>147,650</u>
LIABILITIES AND EQUITY	<u><u>166,328</u></u>

The Edmonton and Area Land Trust was audited for the year 2009. The financial statements are excerpted from the audited statements, and exclude the audit report and notes. A complete copy of the auditor's report is available on request.

APPENDIX: Edmonton and Area Land Trust (non-stewarding) Programs

Date	Program Recipients	What program entailed	Presenter/s	Number of attendees	Where Program delivered	Benefit to the public
Feb 19, 2010	Edmonton Nature Club members & public	EALT's relationship with ENC, benefits & regional issues	Pam Wight	93	Royal Alberta Museum	Understanding of EALT activities, how they can participate or contribute
Feb 21, 2010	Native Plant Workshop	Information display to outreach to attendees	Morgan Traverse	20	Riverdale Community Hall	Raising awareness of EALT and our activities
Mar 21, 2010	Seedy Sunday	Display & interaction with attendees	Morgan Traverse	700-800	Alberta Avenue Community Hall	Raising awareness of EALT and our activities
Apr 2, 2010	Transportation & Public Works Committee	Presenting information on EALT activities, finances, future plans & Q&A	Pamela Wight, Marg Reine, Martin Garber-Conrad	T&PWC & public	City Hall	Understanding EALT's progress
Apr 22, 2010	Earth Day Expo. Government & public	EALT displays, information & response to questions	Morgan Traverse	~100	Twin Atria Bldg	Better understanding of EALT, our activities and benefits
May 8, 2010	Public	EALT displays & information & response to questions	Pam Wight	50-100	Arts on the Ave, 118 th Ave	Education on EALT, regional issues, potential actions, and what they can do
May 27 2010	Riverbend Boy Scouts	Presentation to the Scouts with regard to Nature badge and understanding land protection	Marg Reine	15	Church of Latter Day Saints Riverbend	Encourage youth to become involved with nature education as part of their program
June 10 2010	Jack Clements	Presentation to Jack as past president of Rotary club to encourage the formation of a stewardship endowment	Marg Reine	1	Home	The establishment of a stewardship endowment would enable the EALT to continue to steward new lands
June 17 2010	Master Naturalist Program	Informing participants what a land trust does and how and why land is secured	Marg Reine, Morgan Traverse	25	Grant McEwan College	As part of the Master Naturalist program to train individuals to become naturalists and stewards it informed them about the workings of a land trust.
June 19, 2010	Volunteers with EALT and NCC	On the ground training for stewarding property by involving people in a cleanup and interpretative walks	Morgan Traverse Marg Reine	23	Hick's Property	Encouragement and training in working on land trust properties
Sep 23, 2010	Public – Ghost Bird	Displays, materials, presentation & guest lecture	Jim Butler, Marg Reine, Pam Wight	97	Royal Alberta Museum	Understanding that rare & endangered species depend on habitat conservation
Sep 24, 2010	University Students & lecturers	Presentation	Pamela Wight	15	Grant MacEwan University	How conservation is a mitigative & adaptive strategy for climate change and sustainability & EALT's Culture Conservation Connection
Sep 29-Oct 1,	CLTA/ALTA Conference:	Displays, PPT, & presentation to CALTA conference, A	Pam Wight	15, ~150 attendees	Banff Centre	Education about EALT, activities, partnership perspectives

Date	Program Recipients	What program entailed	Presenter/s	Number of attendees	Where Program delivered	Benefit to the public
2010	Municipalities, planners, conservancies, public					
Sept 8& 9 2010	Task Force Members For outreach campaign	Training for task force members to work on the outreach campaign	Roger Breault, Pam Wight, Marg Reine	15	Percy Page Center	Making them aware of the Edmonton and Area Land Trust and our needs
Sept 23 2010	The general Public	Lecture on the Ghost Bird and conservation	Jim Butler	88	Royal Alberta Museum	Education of general public on conservation issues and importance of land trusts
Oct 5, 2010	Seniors Recreation and education group	PPT on regional issues, EALT activities & mechanisms to conserve. Q&A	Pam Wight, Morgan Traverse	8	Northgate Lions Centre	Understanding of EALT's work & potential contributions/participation
Oct 6 2010	King's College University Ecology class	Interpretation of the Larch Sanctuary for students to understand ecology in the field and what a land trust does	Marg Reine	9	Larch Sanctuary	These students will go on to do interpretation and field work that will engage the public in the future.
Oct 6, 2010	Public, COE & media at Mural Unveiling	Short speech on EALT & our Culture-Conservation project	Pam Wight	n/a	Outside Westside Automotives	Understanding link of conservation and culture and the City's Mural Program
Oct 14, 2010	Dignitaries & guests of Larix Communities	EALT displays, materials & tree planting	Pam Wight w other dignitaries	50	Larch Park	Understanding that EALT is entrusted with stewarding Larch Sanctuary to high level of conservation, & understanding our activities
Nov 4 2010	King's College University senior environmental class Capstone project	Informing students regarding the Larch lands ecology and how the land trust is involved	Morgan Traverse	7	Larch Sanctuary	The students are doing a class project to develop signage for the property that will inform the public in the near future regarding interpretation of the ecology of the sanctuary
Nov 7	Grant McEwan College students	Giving an interpretative walk to students to provide insight for a nature writing project	Brian Stephens, Pam Wight	30	Whitemud Ravine Nature Reserve	The students will be doing creative writing for article about nature and its importance to people for the EALT website