

MEDIA KIT

ABOUT US

The Edmonton and Area Land Trust collaborates with landowners to conserve their land, through donation or conservation easements. We work with our team of volunteers to steward these areas of biodiversity, for the benefit of both wildlife and people.

MISSION

We conserve nature in Edmonton and area, engaging people and communities in land conservation and stewardship.

VISION

A network of forests, river valleys, wetlands, lakes, and farmlands in Edmonton and area is conserved as a legacy for future generations.



MEDIA

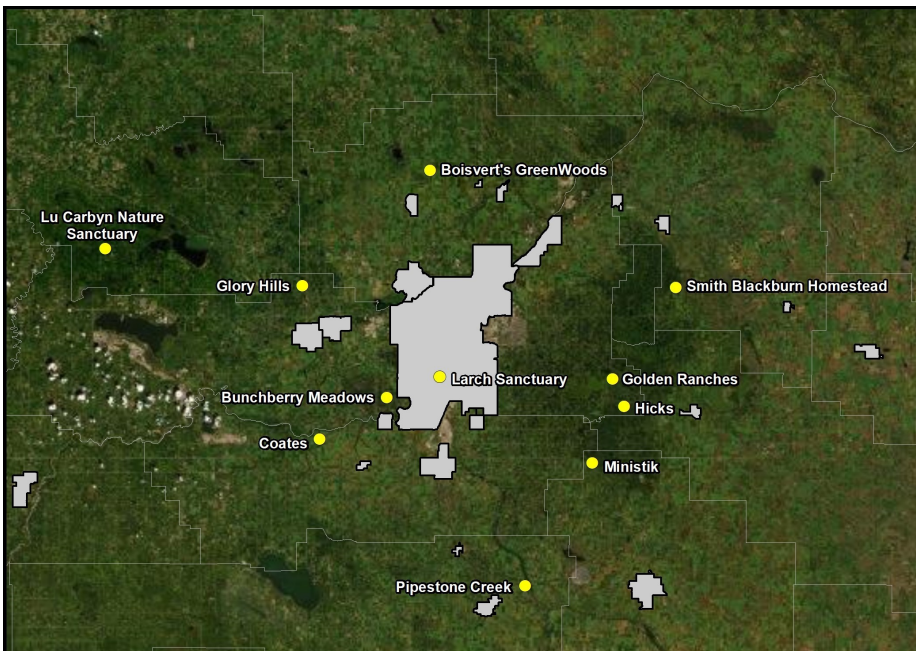
We love to share our stories! We can speak to you about our lands, new securements, our volunteer and community engagement workshops, and other special events.

We can contribute information and narratives about:

- Benefits of Nature
- Natural Areas and Climate Change
- Recreation and natural areas (high impact vs. low impact activity)
- Forests and native species
- Protecting pollinators
- Species at risk in Alberta
- Conservation
- Wildlife
- Visiting an EALT conservation land

MEDIA KIT

- EALT was founded in 2007 through collaboration of 6 organizations: the City of Edmonton, the Edmonton Community Foundation, the Edmonton Nature Club, the Urban Development Institute – Greater Edmonton Chapter, Legacy Lands Conservation Society, and the Land Stewardship Centre of Canada.
- Weve secured 12 conservation lands, totaling over 2,240 acres in the Edmonton region, and we are always seeking new opportunities to secure more land.
- We welcome the public to visit our lands, where over 30 kilometers of trails are accessible.
- We have a robust team of volunteers who help us steward our lands and engage with the community—they donated over 3,200 hours in 2019!
- We co-manage land with various organizations like the Nature Conservancy of Canada, Alberta Fish and Game Association, and the Alberta Conservation Association to maximize local conservation efforts.
- Our Protecting Pollinator program has been an influential initiative in the Edmonton region. Weve delivered over 40 bee hotel workshops and distributed over 600 bee hotels to support native bee populations.
- We enhance wildlife habitat, and have installed 400 bird nest boxes and 20 bat boxes on our conservation lands.



#101, 10471 – 178 Street
Edmonton, Alberta
T5S 1R5
780-483-7578
info@ealt.ca
ealt.ca