

PIPESTONE CREEK

SELF-GUIDED TOUR



TABLE OF CONTENTS

About EALT	4
Pipestone Creek	5
Directions.....	6
Self-guided Tour Trail Map.....	7
1: Tree Planting	8
2: Native Plants	9
3: Oxbow Lake	10
4: Nest Boxes	11
5: Sounds of Nature	12
6: Fence for the Forest.....	13
7: Beaver Trail.....	14
8: Black Knot Fungus.....	15
9: Nature Watch	16
10: Geocaching	17
How You Can Help	18

ABOUT EALT

Edmonton and Area Land Trust (EALT) is a non-profit organization dedicated to conserving natural areas in and around Edmonton to protect biodiversity, wildlife habitat, and allow individuals to connect with nature, not only today, but for generations to come.



EALT acknowledges that Canada's Indigenous peoples were the original stewards of the land. Learn more at www.ealt.ca/indigenous-connections

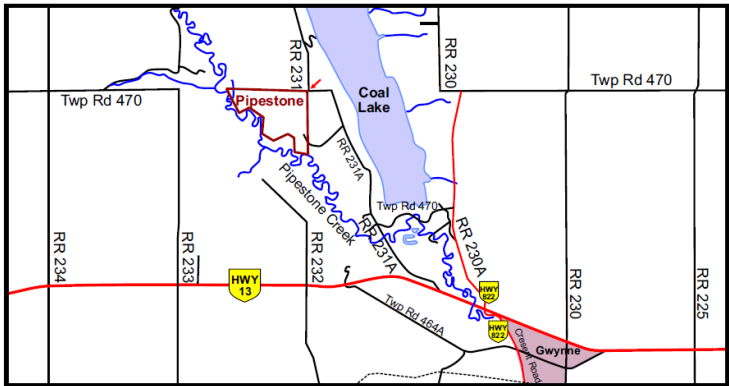
PIPESTONE CREEK

In 2012, EALT acquired Pipestone Creek Conservation Lands—a unique area bordering a creek, which includes an oxbow lake. Its riparian area, woodlands, and meadows are home to unique species of plants as well as deer, great blue herons, songbirds and waterfowl. By preserving this land, the creek and riparian area can safely function as a corridor for wildlife movement. Protecting the creek also helps create a healthy watershed, and in turn, healthy water for our communities nearby.



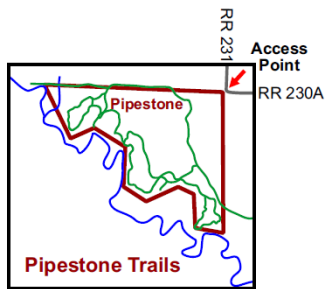
PHOTO BY BARRY MCDONALD

DIRECTIONS

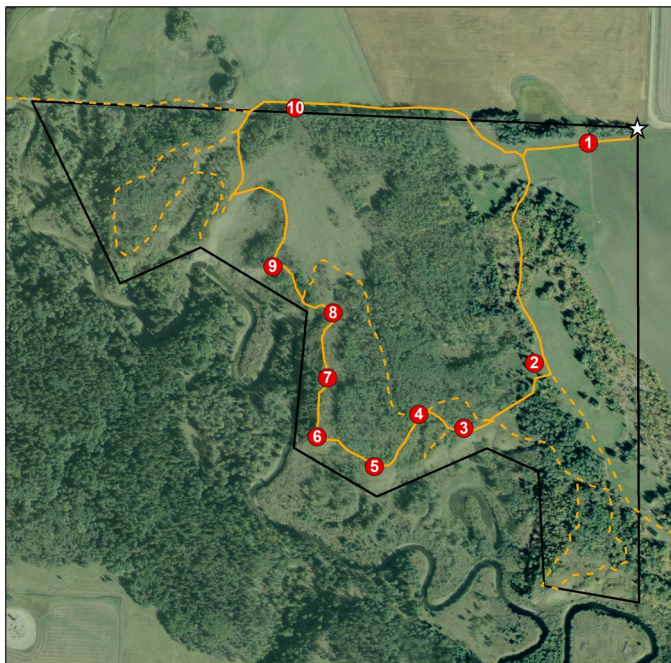


FROM WETASKIWIN:

Head east on HWY 13. Turn north on RR 231A. Continue north to the junction of RR 231A and RR 231. Access to Pipestone Creek is on the west side of this corner.



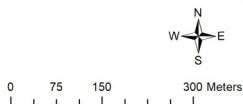
SELF-GUIDED TOUR TRAIL MAP



Legend

- Points of Interest
- Self-guided Tour (2.3 km)
- - - Additional Trails

- ★ Public Access Point
- Boundary



© EALT 2017

1

TREE PLANTING

E 349270 N 5876589 UTM Zone 12

Look out across the clearing and note the young white spruce emerging from the grass. Native spruce, aspen, poplar, and birch saplings have been planted throughout this natural area to help restore damage done from past gravel mining operations. Look for more of these saplings as you walk along the trail; there are 30,000 of them!

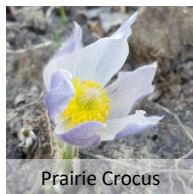
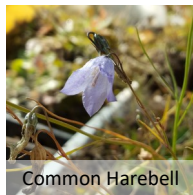


2

NATIVE PLANTS

E 349240 N 5876263 UTM Zone 12

Watch your step! Each orange flag marks a patch of native plants that was saved from a highway expansion project and transplanted here. Some of the plants you may see include pussy-toes, avens, sage, cinquefoil, harebell, and crocuses. These native plants are a great food source for pollinators.



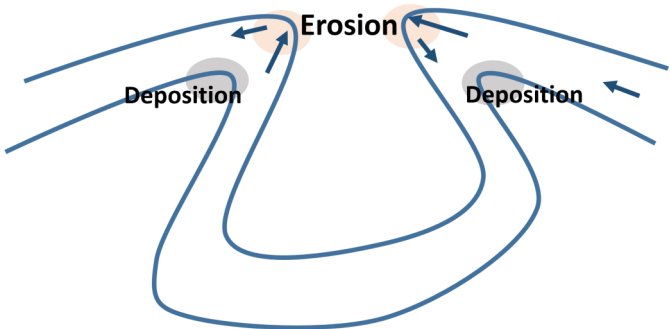
3

OXBOW LAKE

E 349124 N 5876125 UTM Zone 12

The U-shaped body of water you see below is called an oxbow lake. The oxbow is free-standing water that was once a meander in Pipestone Creek. Fast flowing water eroded the outside curves of the creek while depositing soil on the inside curves, eventually cutting through the narrow neck of land, leaving the oxbow stranded.

Oxbow Formation



4

NEST BOXES

E 349050 N 5876148 UTM Zone 12



There are more than 30 nest boxes installed here to provide habitat for cavity nesting birds. The specific design and entrance hole size determine which species will use the box. For example, the box on this tree is designed for tree swallows or bluebirds. Other boxes along the trails are designed for chickadees and wrens. EALT volunteers clean out these nest boxes annually.

5 SOUNDS OF NATURE

E 348977 N 5876062 UTM Zone 12

Stop here for a few moments to listen to the world around you. Do you hear the breeze rustling through the leaves? Or the boreal chorus frogs croaking, sounding like your fingernail running down the teeth of a comb? Can you hear the whistling song of the white-throated sparrow? Or the curdling screams of a red-tailed hawk?



6

FENCE FOR THE FOREST

E 348883 N 5876111 UTM Zone 12

The fence below the slope was installed to keep Off-Highway Vehicles (OHVs) out of the natural area. OHVs, such as quads and snowmobiles, cause damage to our young tree saplings, erode slopes, and spread invasive weeds. Everyone is welcome to enjoy Pipestone Creek Conservation Lands on foot.



PHOTO BY JARED EGLINSKI

7

BEAVER TRAIL

E 348900 N 5876208 UTM Zone 12

Can you find the hidden beaver trail that leads down to the creek? Beavers use this path to drag felled trees to the creek, to be eaten or used in their dam or lodge. Follow the beaver trail the opposite way and you will find several beaver-chewed tree stumps. Watch your shins!



8

BLACK KNOT FUNGUS

E 348909 N 5876315 UTM Zone 12

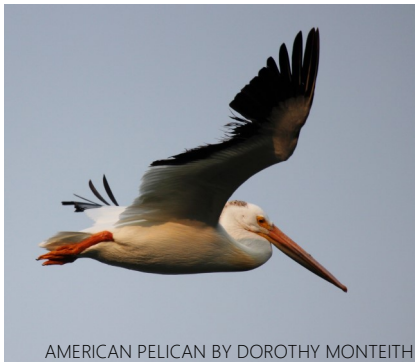


As you walk along the trail, do you notice the black, tar-like lumps on the branches of some of the shrubs? That's black knot fungus, a disease that affects several species of trees and shrubs in this region, and quickly spreads by wind or rain. Fortunately, it can be managed. In late fall to early spring, EALT volunteers come out to prune the infected branches and dispose of the knots.

9 NATURE WATCH

E 348810 N 5876391 UTM Zone 12

At this amazing vantage point, take a few minutes to patiently watch for wildlife. Scan for moose and deer walking in the trees, ducks swimming, or great blue herons hunting. Look up to the sky - if you're lucky, you might see a pelican or swan flying overhead.



AMERICAN PELICAN BY DOROTHY MONTEITH



MOOSE BY GERALD ROMANCHUK

10 GEOCACHING

E 348847 N 5876652 UTM Zone 12



Geocaching is an exciting outdoor treasure hunt. Using a GPS or the Geocaching Smartphone App, you follow coordinates and find hidden containers - in parks, behind trees, under logs, and more! There's a logbook to sign and cool swag to trade inside. Let's try it: you're at ground zero of a geocache now, meaning it could be anywhere, within a few meters of this point. Helpful hint: *fence post in the trees.*

HOW YOU CAN HELP

Donate! Every donation helps conserve nature for the future www.ealt.ca/donate

Volunteer! Volunteer at our conservation lands or at outreach events www.ealt.ca/volunteer

Visit! Visit our conservation lands to experience nature www.ealt.ca/conservation-lands

Advocate! Spread awareness about EALT and local conservation [@EdAreaLandTrust](https://twitter.com/EdAreaLandTrust)

Partner! Conservation is a community effort www.ealt.ca/partnerships

Bequest! Leave a legacy in your Will www.ealt.ca/legacy



#101, 10471—178 Street

Edmonton, AB T5S 1R5

780-483-7578

info@ealt.ca

@EdAreaLandTrust

You can visit more of EALT's natural areas!

Directions and trail maps are available at:

www.ealt.ca/conservation-lands