

BOISVERT'S GREENWOODS

SELF-GUIDED TOUR



TABLE OF CONTENTS

About EALT	4
Boisvert's GreenWoods	5
Directions	6
Self-Guided Tour Trail Map	7
1: Bee Hotel	8
2: Going Batty	9
3: Geocaching	10
4: Dugout	11
5: Fantastic Fungi	12
6: Owl Box	13
7: Old-Growth Forest	14
8: Woodpecker Snag	15
9: A Stepping Stone	16
10: Nest Boxes	17
You Can Help	18

ABOUT EALT

Edmonton and Area Land Trust (EALT) is a non-profit organization dedicated to conserving natural areas in and around Edmonton to protect biodiversity, wildlife habitat, and allow individuals to connect with nature, not only today, but for generations to come.



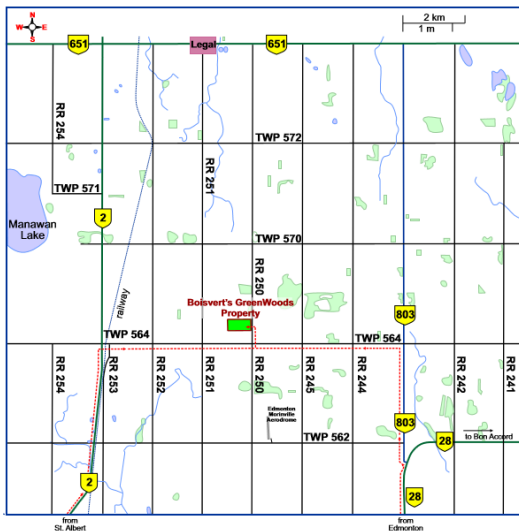
EALT acknowledges that Canada's Indigenous peoples were the original stewards of the land. Learn more at www.ealt.ca/indigenous-connections

BOISVERT'S GREENWOODS

With its proximity to Manawan Lake (an Important Bird Area), Boisvert's GreenWoods helps form important stepping stones for wildlife travel, as well as for habitat and biodiversity conservation. The surrounding landscape is largely agricultural, with fragments of natural habitat. Conservation of this undisturbed forest stand serves to retain and sustain a parcel of native habitat within the landscape. It is also important to local residents for the opportunity to encounter wildlife to experience the serenity of nature.



DIRECTIONS



FROM NORTH EDMONTON:

Take 97 Street north from Yellowhead Trail, which becomes HWY 28. Turn west (small curve) onto HWY 803 and continue north until TWP 564. Turn west on TWP 564 until RR 250. Turn north onto RR 250. The property is on the left, approximately 0.4 Km north from the TWP 564/RR 250 intersection. (Gated driveway at property.)

SELF-GUIDED TOUR TRAIL MAP



Legend

● Points of Interest

☆ Parking

— Trails (1.5 km)

□ Boundary



0 40 80 160 Meters

© EALT 2018

1

BEE HOTEL

E 330931 N 5971642 UTM Zone 12

Bee hotels are a place for solitary bees to lay their eggs. Solitary bees are different from honeybees and bumblebees because they are much smaller and less aggressive, since they do not have a queen to protect. In the late summer to early fall, bees will lay a row of eggs inside the tunnels, and then cap them off with leaves, mud, wax, or other material. The baby bees will overwinter and hatch out in the spring!



2

GOING BATTY

E 330917 N 5971706 UTM Zone 12

Across the dugout, you can see a rocket bat box on a tall metal post. This is a multi-chambered bat box that can accommodate hundreds of bats in a maternal colony. Rocket boxes offer a variety of roosting conditions. Bats crawl to different sides of the box to cool off or warm up. This box was installed by volunteers in May 2017.



3 GEOCACHING

E 330888 N 5971728 UTM Zone 12

Geocaching is an exciting outdoor treasure hunt. Using a GPS or the Geocaching Smartphone App, you follow coordinates and find hidden containers - in parks, behind trees, under logs, and more! There's a logbook to sign and cool swag to trade inside. Let's try it: you're at ground zero of a geocache now, meaning it could be anywhere, within a few meters of this point. Helpful hint: *along the log*.



4

DUGOUT

E 330887 N 5971744 UTM Zone 12



This is not a naturally-occurring body of water. Dugouts are constructed by humans and are intended to trap and store fresh water. This accumulation of water creates a new habitat for different creatures, creating an entirely new ecosystem. Keep your eyes peeled for Buffleheads, Blue-winged Teal, Moose, White-tailed Deer, or even Great Blue Herons!

5 FANTASTIC FUNGI

E 330835 N 5971809 UTM Zone 12

When a tree becomes a stump, it becomes a whole new habitat for different organisms, particularly mosses, lichens, fungi, and insects. This is called a microclimate, a small area with different climatic conditions than that of the surrounding area, allowing for other species to thrive.



6

OWL BOX

E 330835 N 5971936 UTM Zone 12

If you look up, you'll spot a large nest box. This was designed for the small Northern Saw-whet Owl. These owls prefer that the nest box be installed 12 to 15 feet off of the ground. The opening size of a nest box is important, this one is 2.5 inches in diameter to ensure larger creatures cannot get inside.

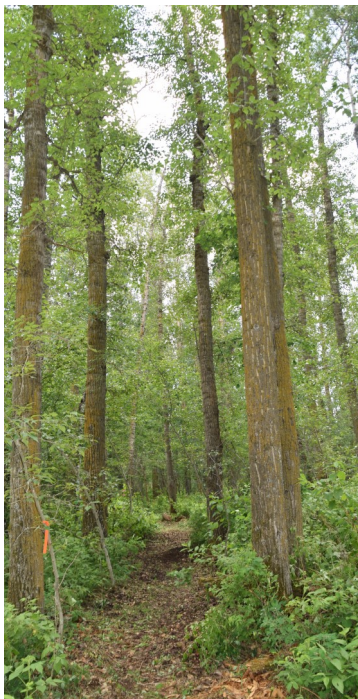


7

OLD-GROWTH FOREST

E 330574 N 5971905 UTM Zone 12

Have you noticed how wide the tree trunks in this forest are? That's because Boisvert's GreenWoods is an old-growth forest, and some of the trees within it are over 100 years old. Large, old trees are important reservoirs of carbon above and below ground, and also offer habitat for many plant & animal species.



8

WOODPECKER SNAG

E 330541 N 5971678 UTM Zone 12

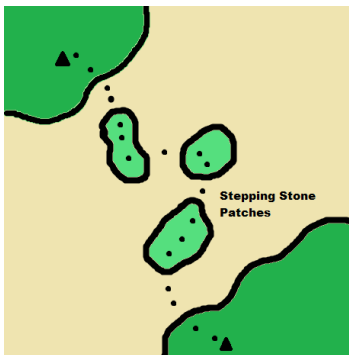
A snag is a term used to describe a standing, dead tree that is usually missing its branches or the entire top part of the tree.

Woodpeckers can often be spotted on snags pecking away for their next meal, since these dead trees are home to many wood-boring beetles and other insects. Snags also provide shelter for many species of birds.



9 A STEPPING STONE

E 330829 N 5971638 UTM Zone 12



Boisvert's GreenWoods is surrounded on all sides by agricultural land, so this forested natural area acts as a stepping stone for wildlife. Stepping stones are patches of habitat that connect larger areas of wildlife habitat. These small habitats are important to the larger ecosystem because they are used by wildlife as they search for food, shelter, or rest.

10 NEST BOXES

E 330895 N 5971634 UTM Zone 12



The wooden boxes along the fence posts are places for Tree Swallows and House Wrens to make their nests. We monitor these nest boxes annually, cleaning out the old nests and tracking which species have used each box. If you're going to install a nest box at your home, make sure you are able to open the box so you can clean it out and have visitors return year after year!

HOW YOU CAN HELP

Donate! Every donation helps conserve nature for the future www.ealt.ca/donate

Volunteer! Volunteer at our conservation lands or at outreach events www.ealt.ca/volunteer

Visit! Visit our conservation lands to experience nature www.ealt.ca/conservation-lands

Advocate! Spread awareness about EALT and local conservation [@EdAreaLandTrust](https://twitter.com/EdAreaLandTrust)

Partner! Conservation is a community effort www.ealt.ca/partnerships

Bequest! Leave a legacy in your Will www.ealt.ca/legacy



**Edmonton & Area
Land Trust**

www.ealt.ca

#101, 10471—178 Street

Edmonton, AB T5S 1R5

780-483-7578

info@ealt.ca

[@EdAreaLandTrust](#)

You can visit more of EALT's natural areas!

Directions and trail maps are available at:

www.ealt.ca/conservation-lands